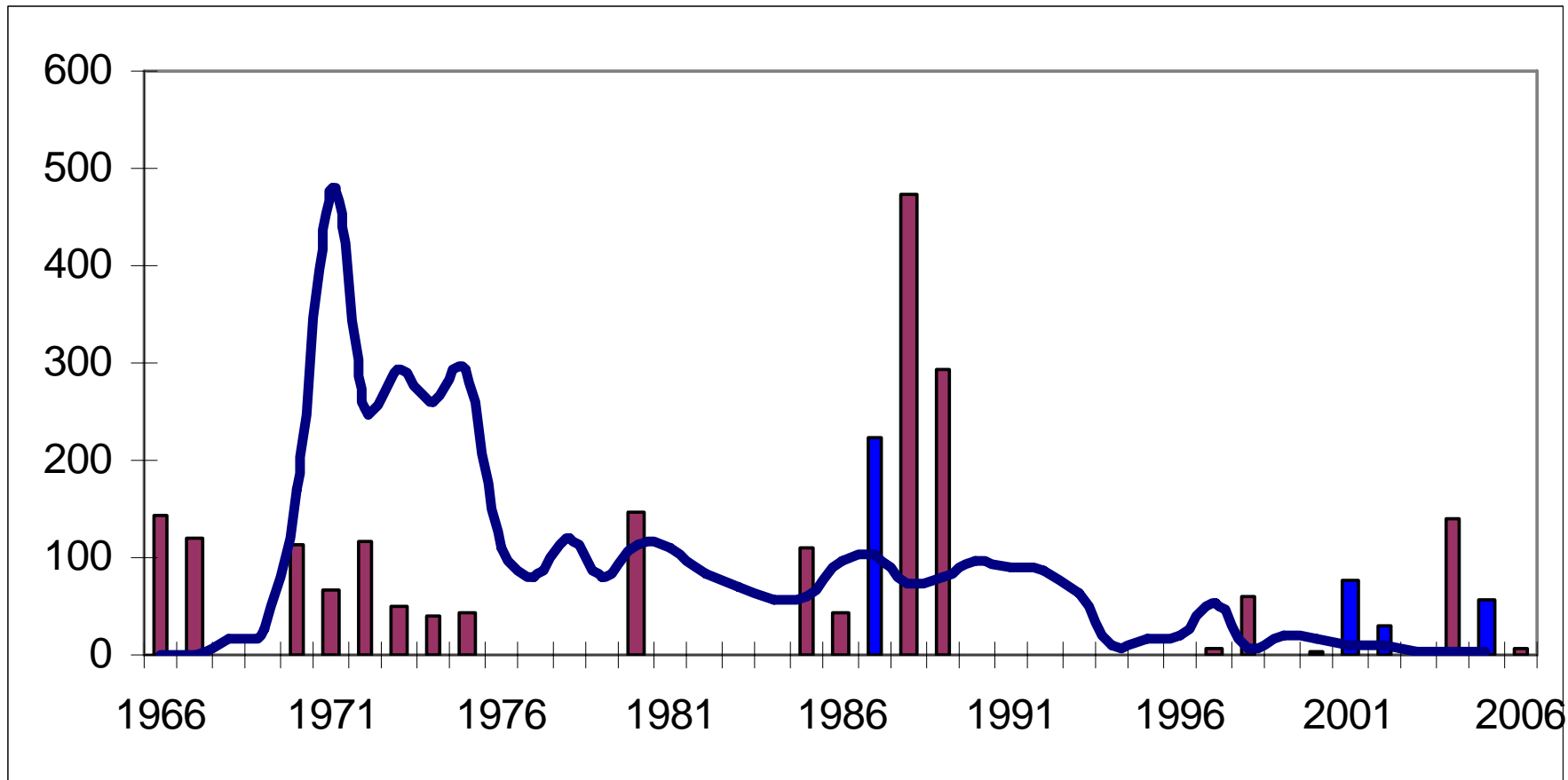


# United Kingdom National Risk Assessment

Michael Charlton-Weedy CBE  
Chief Executive

# UK Disaster & Terrorism Deaths



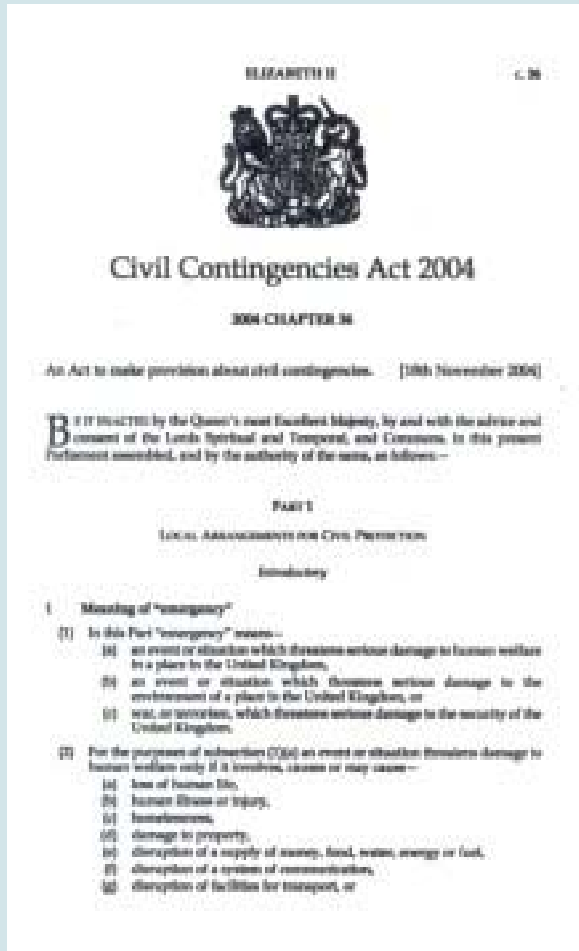
# 2000 - 2002



# Aim

The purpose of this presentation is to describe the UK's national risk assessment concept, systems and processes, and to outline the role of horizon scanning within the wider national risk management framework

# Civil Contingencies Act 2004



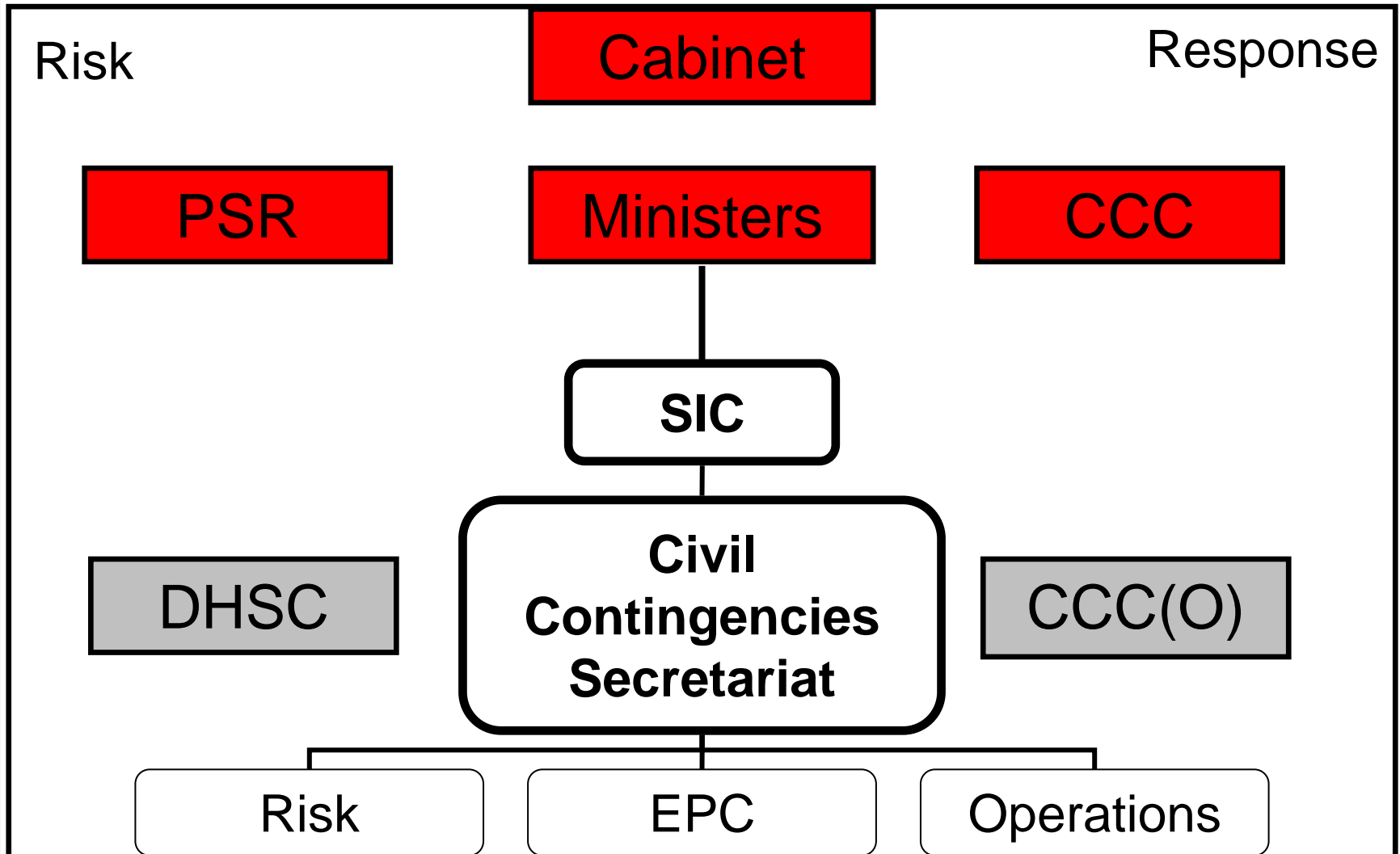
# Local Risk Assessment

- Mandated by Civil Contingencies Act
- Multi-agency collective process
- Information exchange embodied in law
- Publication
- Informs and informed by National Risk Assessment

# National Risk Assessment

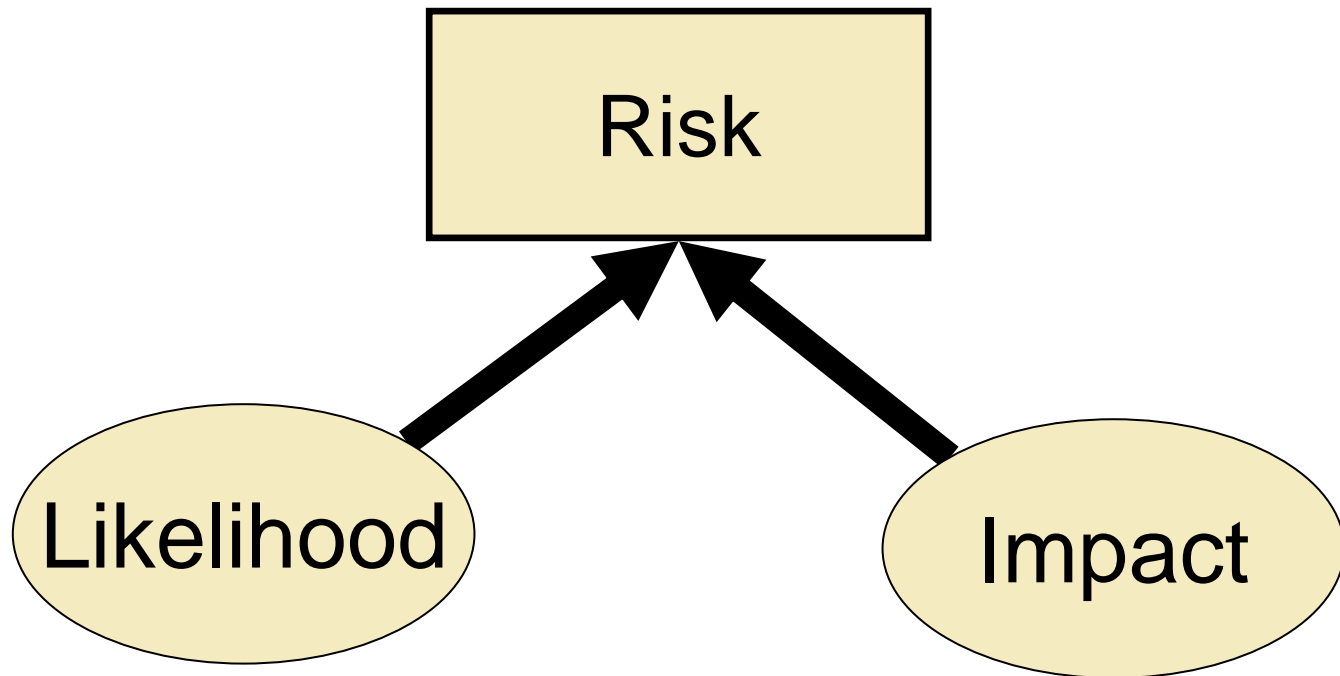
- **Continuous** process involving **all agencies**
- **Comprehensive** coverage of risks at **all levels**
- **Consistent** methodology for assessing **all risks**
- **Coherent** assumptions for **all planners**
- **Coordinating** strategic direction over 5 year period for
  - Investment
  - Research
  - Training & exercises
  - Capability development & management

# UK Risk & Emergency Central Management Structure





# Hazard - Risk Assessment



Reasonable worst case scenario

# Likelihood Assessment

Score	Descriptor	Likelihood over 5 years	Likelihood over 5 years
1	Negligible	>0.005%	>1 in 20,000 chance
2	Rare	>0.05%	>1 in 2,000 chance
3	Unlikely	>0.5%	>1 in 200 chance
4	Possible	>5%	>1 in 20 chance
5	Probable	>50%	>1 in 2 chance

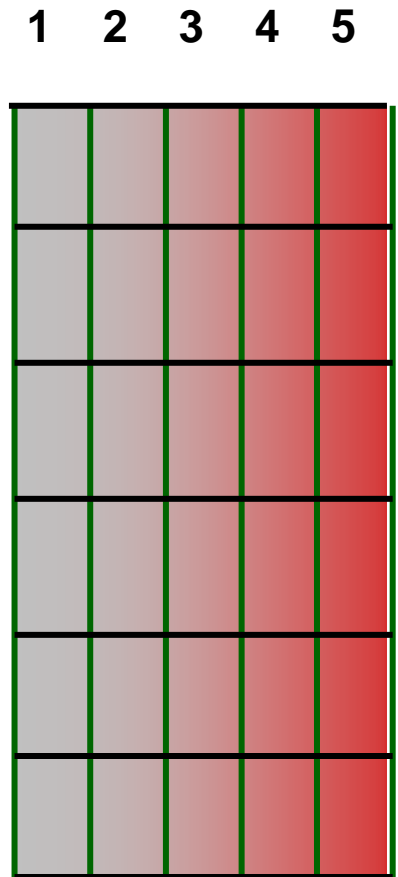
# Assessing impact

- Step 1 – Primary impacts
  - Relatively *objective* measures
  - death, loss of gas, etc.
- Step 2 – Secondary impacts
  - Relatively *subjective* measures
  - Psychological impact (fear/vulnerability)
  - ‘National Security resonance’ / perceived failure of government responsibilities (outrage)

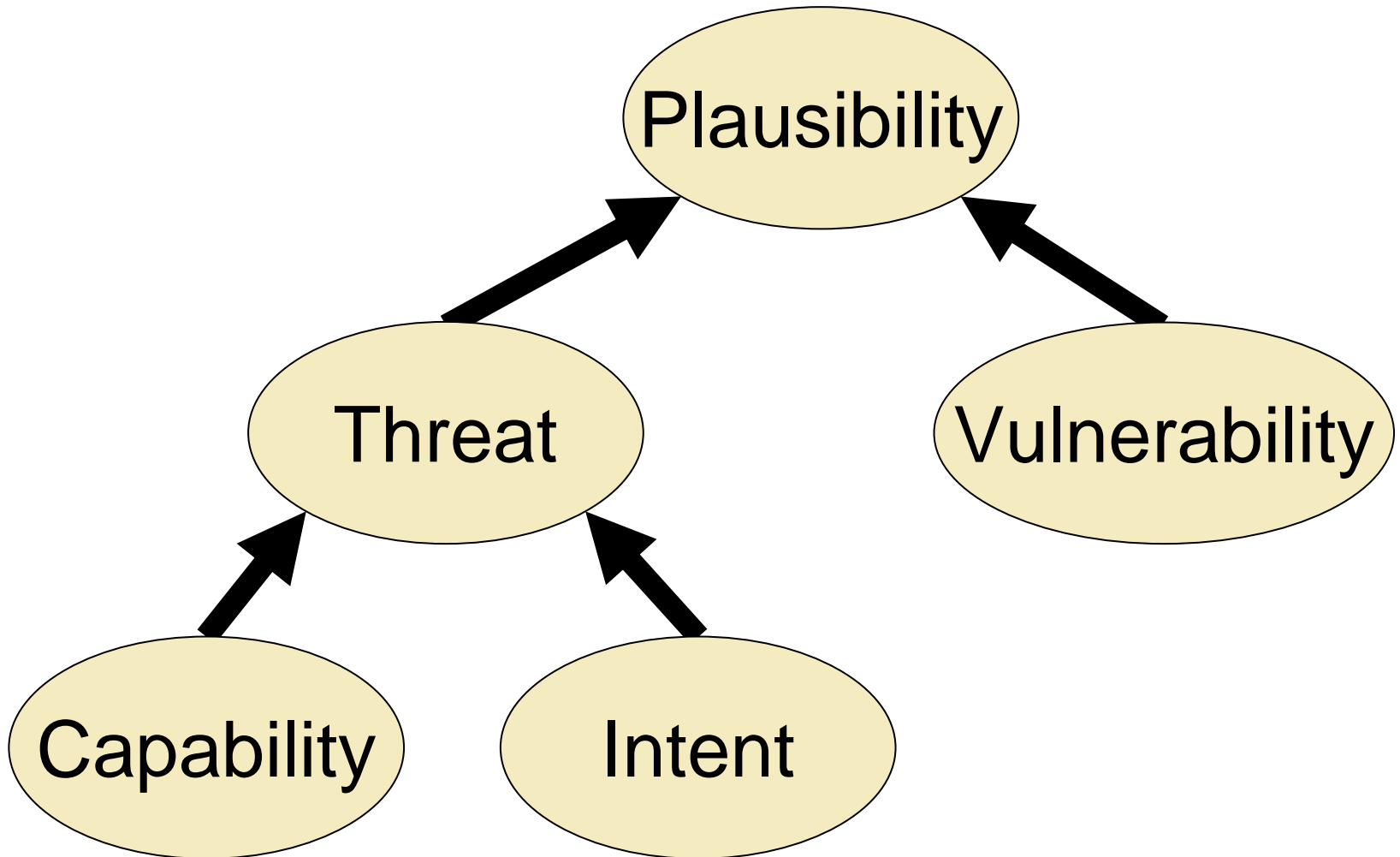
# Impact Assessment

**Overall Impact**

Economic  
Fatalities  
Casualties  
Social Disruption  
Outrage  
Anxiety



# Terrorist Threat vs Classical Hazard



# Risk Assessment Limitations

- Strength & weakness of thoroughness
- *What* but not *When*
- Long-period probabilities
- Rare event phenomena
- Situational & environmental shifts & variations

Therefore require a short span high rate foreground horizon scanning system to achieve near term focus, trigger plans and target asset deployment

# UK Horizon Scanning Approach

- Human network
- Technology at the periphery not the centre
- Multi-disciplinary team (12) in CCS
  - Specialist sub-teams
- Lead departments, agencies & organisations
- Stakeholder engagement
- Checks & balances
- Proven & refined over 7 years

# Process & Products

- Ad Hoc
  - Weather
- Weekly
  - Major events, industrial action
- 2 weekly
  - Winter energy, influenza
- Monthly
  - 0 – 6 – 24 month views



# Health Warning

- Risk is relative: *to an undefined state*
- Our assessments are rooted in our own beliefs and values: *we're all guessing – if we knew, it wouldn't be risk*
- Risk perception and risk analysis are independent variables – *ultimately it's all about people*

Don't Despair!

$$\sum_0^{\infty} P_n \leq 1$$

# United Kingdom National Risk Assessment

Michael Charlton-Weedy CBE  
Chief Executive